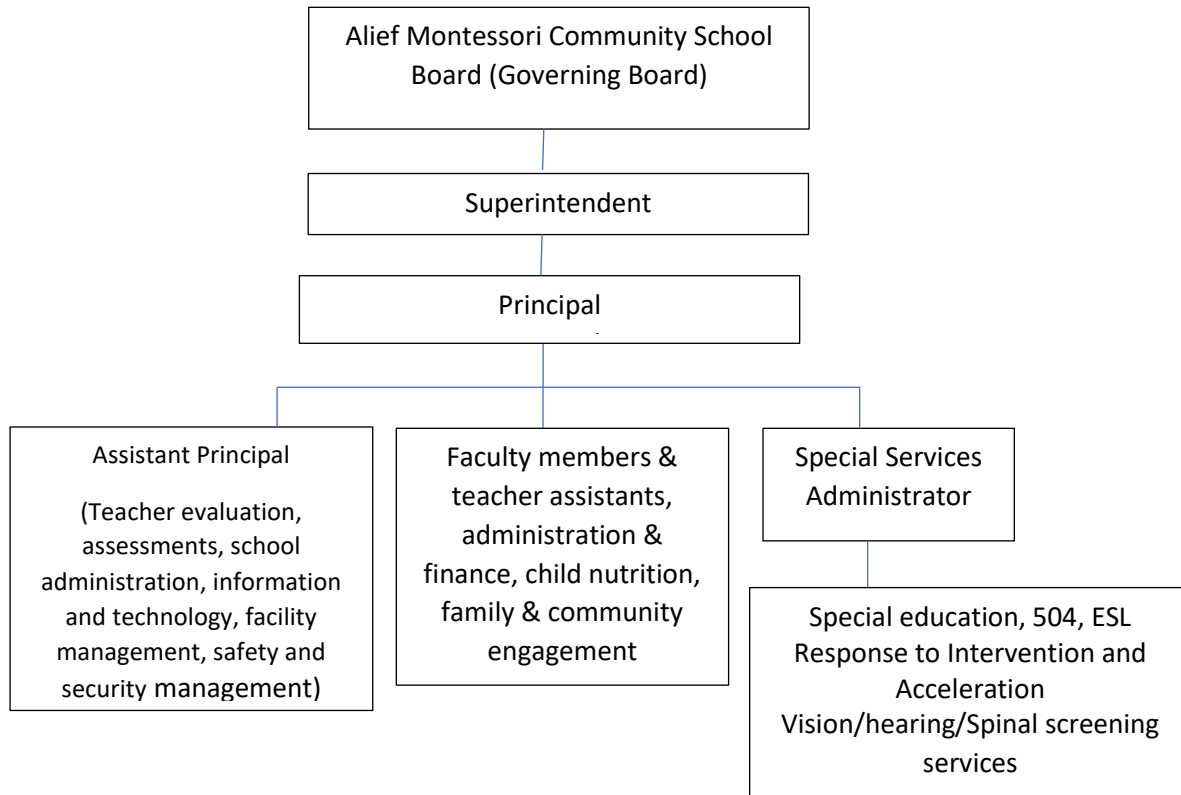




Alief Montessori Community School
12013 6th St, Houston, TX 77072 ♦ Phone (281)-530-9406 ♦ Fax (281) 530-2233
Website: www.amcsmontessori.org

**ALIEF MONTESSORI COMMUNITY SCHOOL
GOVERNING STRUCTURE AND BOARD MEMBERS**



The Governing Structure

The governing body of the open-enrollment charter is the Board of Directors of Alief Montessori Community School (AMCS). The complete list of the AMCS board of directors is found at www.amcsmontessori.org/School Board.

The Board of Directors is established and is tasked with the responsibility of adopting policies, goals and priorities for the school and to monitor its success, hire and evaluate the superintendent, adopt a budget and communicate with the community.

The Board of Directors elects the Board President who must be a current member of the AMCS Board for at least one year. The Board President chairs all meetings of the board to ensure, facilitate, and protect board processes and procedures for decision-making. In the absence of the board president, the board secretary chairs the board meetings.

The Board Treasurer helps the board form financial policies, reviews the budget and expenditures as presented by the AMCS principal and business officer. The AMCS budget and financial statements are reviewed and/or approved by the board members every quarter in the board meeting.

The Secretary of the Board is responsible for collaborating with board members to set up meetings, giving proper and timely notice of any meetings and distributing agendas and minutes. The officers are elected annually by a majority vote of the Board of Directors. All officers of the board shall hold office until their successors are elected, or until their resignation or removal. In the event of a vacancy on the board, the remaining members nominate a successor who meet the qualifications for the unexpired portion of the predecessor in office.

The Board is self-perpetuating with three to nine members replaced, added, or dismissed by a majority vote of the Directors. One of the board members shall be a current or retired teacher of AMCS. The AMCS superintendent is also a voting member of the board. The remaining three-five board members shall be members of the community not directly affiliated with the charter school as an employee. These board members shall serve until they are removed or resign.

The makeup of the Board members reflects the school's ethnic diversity, school leadership and community engagement.

Role of administrators, faculty, parents, students and community members in the leadership and decisionmaking of the school

Currently, the AMCS Superintendent is also the charter school Principal; and therefore, reports to the school board. S(he) is responsible for the overall administrative duties include general supervision of policies and active management of financial affairs. (S)he executes all contracts, mortgages or loans and has authority to institute or defend legal proceedings. (S)he is also responsible to oversee and manage the educational programs of the school. (S)he oversees admissions, and hires and supervises the faculty and staff members. (S)he works with other school administrators and faculty to design and evaluate curriculum and parent education programs. The AMCS Superintendent and the Principal must hold an AMI or AMS certification.

The Assistant Principal assists the Principal in carrying out specific administration functions and office management with guidance from the Principal. (S)he provides invaluable support for the school's staff and families in many areas including information and technology, facility

management, safety and security management She will oversee the general functions of the school when the Principal is absent.

The Special Services Administrator assists the Principal in the administration, assigning and monitoring duties and responsibilities of staff members implementing special education services, response to intervention and academic acceleration, vision, hearing, and spinal screening of students. She is also in-charge of identifying and reviewing vendors offering hardware and software materials used by the Special Services Department.

Montessori teachers are often called "guides" to highlight their unique role in relation to the child. They seek to direct the interests and tendencies of the child, serving as facilitators in the child's own development. The faculty at Alief Montessori are AMI or AMS certified. Each teacher is responsible for directing the class in accordance with the Montessori philosophy and the general policies of Alief Montessori Community School. Teachers establish daily plans and long-term goals for each child and the class as a whole and develop on-going communication with the parents of their students.

AMCS views itself as an educational community rather than an educational institution. A community coalesces around a shared vision and recognizes the interdependence of its members. Central to our decisions and work are the needs of the child: our vision is an environment which nurtures development and seeks realization of the full potential of each student. When our focus narrows or our own individual concerns dominate, we look to the needs of the child to gain perspective and guidance. These instill trust and cooperation ...a spirit of joy in our work and meaning in our life.

Faculty members provide inputs and feedback at the bi-weekly staff meeting. Additionally, faculty, parents, and community members are welcome to bring their input directly to the Principal. The Principal decides if there is a need to include particular issues in our staff meeting, parent meeting or to call a special meeting. If an issue is discussed and a decision is reached in any of these meetings, the Principal informs the party who raised the issue. The decision is posted in our monthly newsletter, special letter to parents and/or announced through the schoolwide messaging system, as needed.

Board of Directors, SY 2022-23, updated 01/27/2023

Paula Palamountain

Board President

Mrs. Palamountain is one of the founding members of the Board since 1998 and has served as the Board Secretary for many years before becoming the board president in January 2023. She has a Bachelor's Degree in Elementary Education from the University of Houston. She is a Montessori educator with extensive school administration experience. She guided a Montessori primary class for ages 3-6 in the reputable Northwood Montessori in Houston for over 25 years. Mrs. Palamountain also served as a co-director for the school in addition to her full-time teaching duties. The Northwood Montessori School continues to carry on the highest quality of Montessori

education under her mentoring after her retirement. Mrs. Palamountain volunteers at AMCS as our special reading tutor for elementary students and facilitator of parent workshops.

Charmaine Constantine

Board Member

Ms. Constantine has served on our school board since 1999. She is the superintendent of Ser Niños Charter School and has been responsible for the development and growth for Ser Niños since 1997. She has her Bachelor's Degree in Business Administration and MEd in Math Education from the University of Houston. Ms. Constantine had extensive and outstanding classroom experiences in math, science and social studies prior to taking over her leadership role at Ser Niño Charter School. She was the Teacher of the Year in 1992 from Anderson Elementary School of HISD.

Perpetua Socorro J. Salvatus Guerrero, Esq.

Board Treasurer

Mrs. Salvatus-Guerrero joined AMCS Board in 2016 and has served as the new Board Treasurer. Mrs. Salvatus-Guerrero was trained in special education, accounting and law. She is a certified public accountant and has her own law firm in Houston, Texas. Mrs. Salvatus-Guerrero is actively volunteering as the Pro Bono Lawyer for charities, defending children's right and woman empowerment. She loves reading, poetry, and creative writing.

Erica McCready

Board Member

Ms. Erica McCready is concurrently the Superintendent and Special Education Coordinator of Houston Heights Charter High School. She joined the AMCS Board in 2020. Ms. McCready has a Masters of Education from Lesley University, Cambridge, MA and a bachelor's degree from Tulane University, LA. She has extensive experience in Special Education as a teacher, case manager and coordinator in HISD middle and high schools. As a parent, she also chose Montessori education for her children in their primary years in school and has been a supporter ever since.

Elizabeth Smith

Board Member

Mrs. Smith is a retired, former AMCS teacher. She taught Upper Elementary for four years, finishing her teaching career at AMCS in 2018. Prior to that she taught 14 years in the Fort Bend, Houston, and Aldine ISDs. She has a Bachelor of Arts degree in English from Sam Houston State University and is certified to teach grades 1-12 in Texas. She previously worked as an administrative secretary at Cullen Bayou Place, the children's psychiatric and residential treatment program at DePelchin Children's Center. Mrs. Smith has volunteered with the AFS Intercultural Program, an international youth exchange organization, serving as a counselor and

liaison to foreign students from many different countries, and has traveled extensively. She is a dedicated supporter of Montessori education.

Delia Presillas

Board Member

Mrs. Presillas is the current superintendent and principal of Alief Montessori Community School. She joined AMCS in 2007 as a lower elementary teacher before becoming the principal in 2013. She has a master's degree in Applied Business Economics and a Bachelor's Degree in Public Administration. She trained with Region 4 ESC-Teacher Trak for her Texas EC-4, ESL and Principal certifications. She is also certified in Montessori elementary and adolescent studies with Association Montessori Internationale (AMI).

Tim Snow

Board Member

Tim joined the AMCS Board in March 2023. Tim attended Union University in Jackson, Tennessee. He holds a Bachelor of Science degree in Sociology and received his elementary AMI certification at the Montessori Institute of North Texas under the direction of AMI trainer, Jean Miller. Tim has been at St. Catherine's since 2006 in a variety of roles—music teacher, adolescent theology teacher, lower elementary guide, and currently as an upper elementary guide.

He believes that Montessori education is the most effective model for working with children in that it fosters interaction between the children and their environment as well as recognizes the importance of natural development of the whole child – mental, physical, spiritual, and emotional.